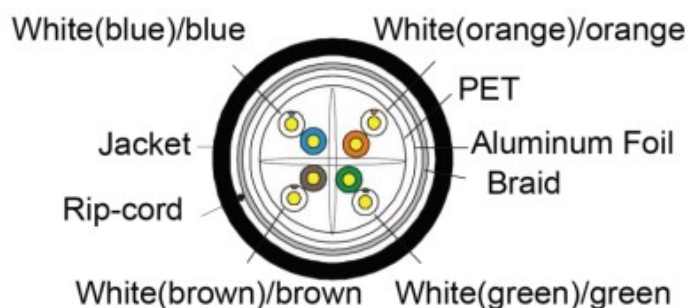
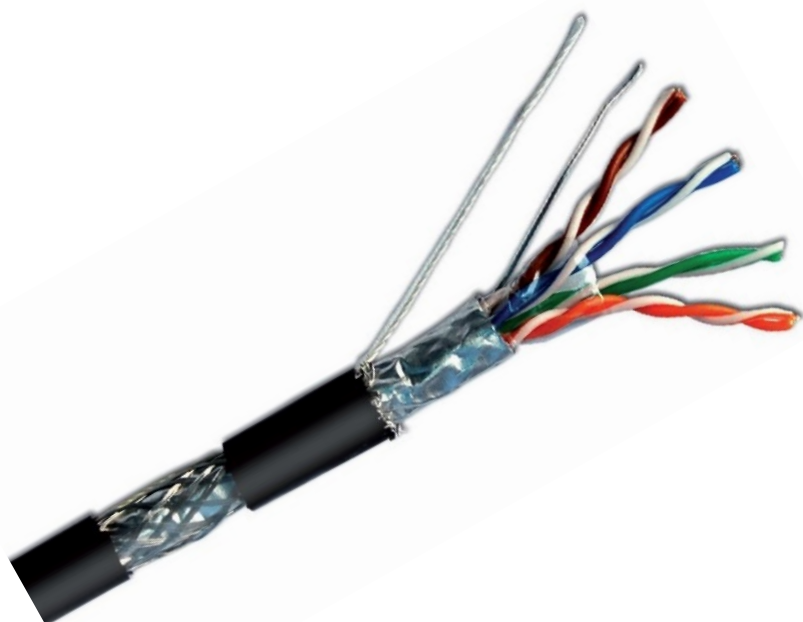


Copper Structured Cabling CAT6 – SF/UTP SOLID OUTDOOR LAN CABLE



Product Description

Briticom Category 6 SF/UTP Outdoor Cable is designed and manufactured to meet and exceed the ISO, CENELEC and TIA standards. Mainly used for harsh and tough environment conditions

This delivers Class FA link and channel performance supporting all applications detailed and proposed within the standards. This superior performance cable is ETL Component Verified.

Features & Benefits

- 25 Years Warranty
- Foiled & Shield / Unshielded Twisted Pair
- PE jackets
- Outdoor & harsh environment use
- Available in different reel lengths and reeling technics

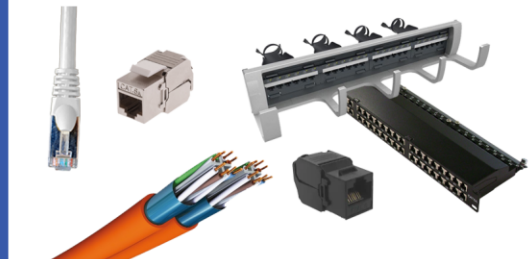
Applications

- LAN Applications
- CCTV
- 10 BASE-T Ethernet
- 100 BASE-T Fast Ethernet 1
- 100 BASE- TX Fast Ethernet
- 155 Mbit ATM; 625 Mbit ATM & 1.2 Gbit ATM

Colour of pairs

- Blue, Blue/White
- Orange, Orange/White
- Green, Green/White
- Brown, Brown/White





Copper Structured Cabling

Technical Specifications

| | |
|---------------------------------|--|
| American Wire Gauge (AWG) | 23 |
| Material | Conductor material - Solid bare copper Conductor insulation - HDPE Inner shield material - Aluminium foil Outer shielding material - Braided shield, TC Cable jacket - PE |
| Insulated conductor diameter | 1.09 ± 0.03 mm |
| Outer cable diameter | 7.8 ± 0.5 mm |
| Jacket thickness | 0.65mm ± 0.05 mm |
| Pulling strength | 110N |
| Minimum bend-radius | 4 times outer diameter |
| Nominal velocity of propagation | 69% |
| Insulation resistance - MΩ/km | Min. 5000 |
| Propagation delay skew | Max 45 ns/100m |
| Impedance 1-250 MHz | 100 ± 15Ω |
| DC resistance max | 9.38 Ohm/100m |

Ordering Information

| Description | Part Number |
|---|------------------|
| OUTDOOR CAT6 SF/UTP PE 305M 23AWG BLACK –PLATINUM | ODSFUTPC6PE305-P |

